



**St. Petersburg Yacht Club -Commodore Bruce Watters  
Club Championship Regatta  
October 3, 2020**

**Organizing Authority: St. Petersburg Yacht Club**

**SAILING INSTRUCTIONS**

**1 RULES**

1.1 The championship will be governed by the rules as defined in *The Racing Rules of Sailing* and the rules for Handling Boats (Appendix 1) and Equipment List (Appendix 2). In the event of a conflict between the notice of race and the sailing instructions, the sailing instructions shall prevail.

1.2 J 70 Class rules C3.3 and C9.3 are in effect.

1.3 RRS 44.1 is changed to require a boat to take a one-turn penalty for breaking a rule of part 2.

1.4 When flag Y is displayed from the RC Signal Boat no later than the warning signal, spinnakers shall not be used for that race.

**2 NOTICES TO COMPETITORS**

Notices to competitors will be posted on the Official Notice Board on Yacht Scoring and Unofficial Notice Board located inside the St. Petersburg Sailing Center (SPSC).

**3 CREW**

3.1 Each skipper is responsible for damage or loss to their boat unless responsibility is otherwise assigned by the protest committee.

3.2 After the warning signal for a race the registered skipper shall not leave the helm, except in an emergency.

3.3 The same crew shall race in all races, except for reasons satisfactory to the OA. Requests for a change of crew shall be submitted in writing to the OA

3.4 Once a skipper and/or crew have been excused, that person may not return for the balance of the series.

**4 CHANGES TO SAILING INSTRUCTIONS**

Race committee notices or changes to the sailing instructions will be posted and signaled no later than 30 minutes before the departure of the race committee signal boat. Any change in the schedule of races will be posted before 1800 hours the day before it will take effect.

**5 IDENTIFICATION AND ASSIGNMENT OF BOATS**

5.1 Boats will be identified by hull and sail number.

5.2 Boats will be assigned by a drawing done by the Sailing Center Personnel. You will be notified via email as to which boat has been assigned to you not later than Thursday, October 1, 2020.

## **6 SIGNALS MADE ASHORE**

6.1 Signals made ashore will be displayed from the SPSC flagpole located on the south side of SPSC.

6.2 Flag AP with two horns (one when lowered) means "The race is postponed. The next warning signal shall be made no sooner than 45 minutes after the AP is lowered".

## **7 SCHEDULE**

### **7.1 Saturday, October 19**

0830 Morning briefing

1000 Warning signal, first race of the day

7.2 One completed race shall constitute a regatta.

7.3 Eight races are scheduled.

## **8 RACING AREA**

The racing area will be on Tampa Bay just off downtown St Petersburg.

## **9 COURSE**

9.1 Appendix 3 shows the course diagram, the order in which marks are to be passed or rounded and the side on which each mark is to be left.

## **10 MARKS**

10.1 Original marks 1 and 2 will be yellow tetrahedrons.

10.2 New marks will be green tetrahedrons.

## **11 THE START**

11.1 Races will be started in accordance to RRS Appendix U.

11.2 Before the start of the first race each day, each boat is required to sail past the stern of the race committee signal boat and verbally check in.

11.3 The starting line will be between an orange flag on the RC signal boat and an orange ball on the pin end.

11.4 A boat starting more than 4 minutes after her starting signal will be scored "Did Not Start" without a hearing. This changes RRS A4.1 and A5.

## **12 RECALLS**

The race committee signal boat will, after the starting signal, attempt to hail the sail numbers of boats that are OCS on VHF channel 63. Flag X will not be displayed. The delay of such a hail, or failure of a competitor to hear such a hail, shall not be grounds for redress; this changes RRS 62.1(a).

## **13 CHANGE OF THE NEXT LEG OF THE COURSE**

13.1 Changes of course will be signaled according to RRS 33.

## **14 THE FINISH**

The finish line will be between the staff from which an orange flag is displayed on the race committee signal boat and the course side of the finishing mark. The finish mark will be an orange ball.

## **15 BREAKDOWNS AND TIME FOR REPAIRS**

15.1 Before the warning signal for a race, a boat may display flag L to signal a breakdown or damage to the boat, her sails or injury to her crew. She shall proceed as soon as possible close to leeward of the RC boat and remain there, unless otherwise directed.

15.2 The time allowed for repairs will be at the discretion of the RC.

15.3 After the warning signal of a race, the race will not be postponed or abandoned due to breakdown unless the breakdown signal was displayed as required by SI 15.1.

## 16 TIME LIMITS

16.1 If no boat completes the first lap within 30 minutes, the race committee will abandon the race. For the purpose of this rule a "lap" means the required rounding of mark 2 or the leeward gate for the first time.

16.2 The time limit is 60 minutes. Any boat finishing more than 15 minutes after the first boat that sails the course finishes, will be scored TLE (Time Limit Expired) and receive points equal to one more than the last boat finishing within the time limit. This changes RRS 35, 63.1, A4.1 and A5.

## 17 WITHDRAWING FROM A RACE

A boat which leaves the racing area shall notify the race committee at the first reasonable opportunity.

## 18 PROTESTS

18.1 A competitor's intent to protest shall be reported to the race committee finish boat promptly upon finishing that race. This changes RRS 61.1(a).

18.2 Protests shall be made in writing on forms available at the SPSC, and filed with the protest committee within 30 minutes of the race committee finish boat docking time, which will be posted on the official regatta notice board.

18.3 Protest notices and hearing schedules will be posted no later than 15 minutes after the protest filing time limit.

18.4 RRS 66 is changed by adding this sentence: On the last day of racing, a party to a hearing may ask for a reopening only if the request is received within one hour of receiving the protest decision.

## 19 SCORING

The Low Point Scoring System of Appendix A of *The Racing Rules of Sailing* will apply except that no score will be excluded.

## 20 TRASH DISPOSAL

The discharge of refuse into the water is prohibited during the entirety of this event. Any boat breaking this rule will be assessed a 20% penalty for the first race competed in by the infringing boat on the day of the breach.

## 21 RADIO COMMUNICATION

Except in an emergency, a boat shall neither make radio transmissions while racing nor receive radio communications not available to all boats. This restriction also applies to mobile telephones.

## 22 PRIZES

Prizes will be awarded as per the NOR and **The Commodore Bruce Watters Trophy** will be awarded to the first-place skipper and crew and their names will be engraved on it. It will remain displayed at the club.

## 23 DISCLAIMER OF LIABILITY

Competitors participate in the regatta at their own risk. See rule 4, Decision to Race. The organizing authority will not accept any liability for material damage or personal injury or death sustained in conjunction with, prior to, during or after the regatta.

# Appendix 1

## Handling of the boats

### 1 General

While all reasonable steps are taken to equalize the boats, variations will not be grounds for granting redress (changes rule 62).

### 2 Prohibited items and actions

Except in an emergency or in order to prevent damage or injury, or when directed by the RC otherwise, the following are prohibited:

- 2.1 Any additions, omissions or alterations to the equipment supplied.
- 2.2 The use of any equipment for a purpose other than that intended.
- 2.3 The replacement of any equipment without the sanction of the RC.
- 2.4 Sailing the boat in a manner that it is reasonable to predict that significant further damage would result.
- 2.5 Moving equipment from its normal stowage position except when being used.
- 2.6 Boarding a boat without prior permission.
- 2.7 Taking a boat from its berth or mooring without having permission from the RC, or, on race days, while "AP" is displayed ashore.
- 2.11 Attaching lines to the fabric of spinnakers.
- 2.12 Perforating sails, even to attach tell tales.
- 2.13 Radio transmission while racing (including mobile telephones), except to report damage or in response to a request from the RC.
- 2.14 Adjusting or altering the tension of standing rigging, excluding the backstay.
- 2.15 Using a reef line as an outhaul.
- 2.16 Omitting any headsail car or turning block before sheeting.
- 2.17 The use of electronic instruments other than compass and watches.
- 2.18 Using the spinnaker pole to wing out the foresail.
- 2.19 Marking directly on the hull or deck with permanent ink.
- 2.20 Using a compass, other than the boat's compass or a hand held compass. The handheld compass shall not be affixed to the boat or rigging. A hand held compass is permitted to be electronic, but shall have no tactical capability. GPS compasses are specifically prohibited.
- 2.21 The use of the shrouds (including any inner shrouds) above the lower bottle screw (turnbuckle) to facilitate tacking or gybing, or to aid the projection of a crew member outboard is prohibited. Penalties for breaches of this rule will be RC initiated. This changes the first sentence of RRS Appendix C8.2.

### 3 Permitted items and actions

The following are permitted:

- 3.1 Taking a bag on board containing:
  - (a) basic hand tools
  - (b) adhesive tape (non-residue-leaving)
  - (c) line (elastic or otherwise of 4 mm diameter or less)

- (d) marking pens (not permanent markers)
- (e) tell tale material
- (f) hand held compass
- (g) shackles and clevis pins
- (h) velcro tape
- (i) spare flags

3.2 Using the contents of the bag to:

- (a) prevent fouling of lines, sails and sheets
- (b) attach tell tales
- (c) prevent sails being damaged or falling overboard
- (d) mark control settings
- (e) make minor repairs

3.3 Changing the mainsheet purchase, provided it is restored to its original configuration before leaving the boat.

#### 4 Mandatory items and actions

The following are mandatory:

4.1 Before leaving the boat, the skipper shall complete and sign a written damage report and submit it to the RC, even if no damage or loss is recorded. Reports shall include any evidence of matters that could cause damage or disadvantage to the boat in future matches.

4.2 At the end of each sailing day:

- (a) folding or rolling, bagging and placement of the sails as directed
- (b) leaving the boat in the same state of cleanliness as when first boarded that day.

4.3 At the end of the final day for a particular boat, cleaning the boat (cabin and decks), removing all trash and removing all tape and marks.

4.4 Any request to alter, in any way, the equipment on a boat shall be in writing and worded to permit a yes or no answer.

4.5 Complying with any regulations, including speed restrictions and navigation marks, while leaving or returning to the berth.

4.6 Infringement of items 4.2 and 4.3 will be considered as damage and the cost of rectification will be deducted from the damage deposit.

## Appendix 2

### Equipment List

The following non-fixed items, provided by the OA, are to be carried on board at all times in their designated places while sailing. Any loss shall be reported on the daily damage report.

### Sails and sailing equipment

Mainsail and set of battens

Headsail

Spinnaker

3 sail bags

One spinnaker sheet

One headsail sheet

Tiller extension

Two headsail trackcars

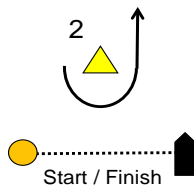
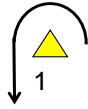
Life jackets for each crewmember

Two mooring lines

Two fenders

### Appendix 3

(Course Diagram not to Scale)



COURSE: Start – 1 – 2 – 1 – Finish

***Important note: Mark colors and shapes are illustrative only.***